

Managing a Pandemic: Logical Framework

Pandemic Period Strategy

- ❑ India is not affected
 - Delay entry - strategy as in phase 5
 - Surveillance/ Port/ airport Control
- ❑ India is affected-
 - Initial Period — Mixed strategy
 - Clusters in non affected areas
 - cluster containment
 - Substantial population affected
 - Provision of medical care
 - provision of essential services
 - risk communication
 - vaccination (subject to vaccine availability)

Situation - 1

India is not affected

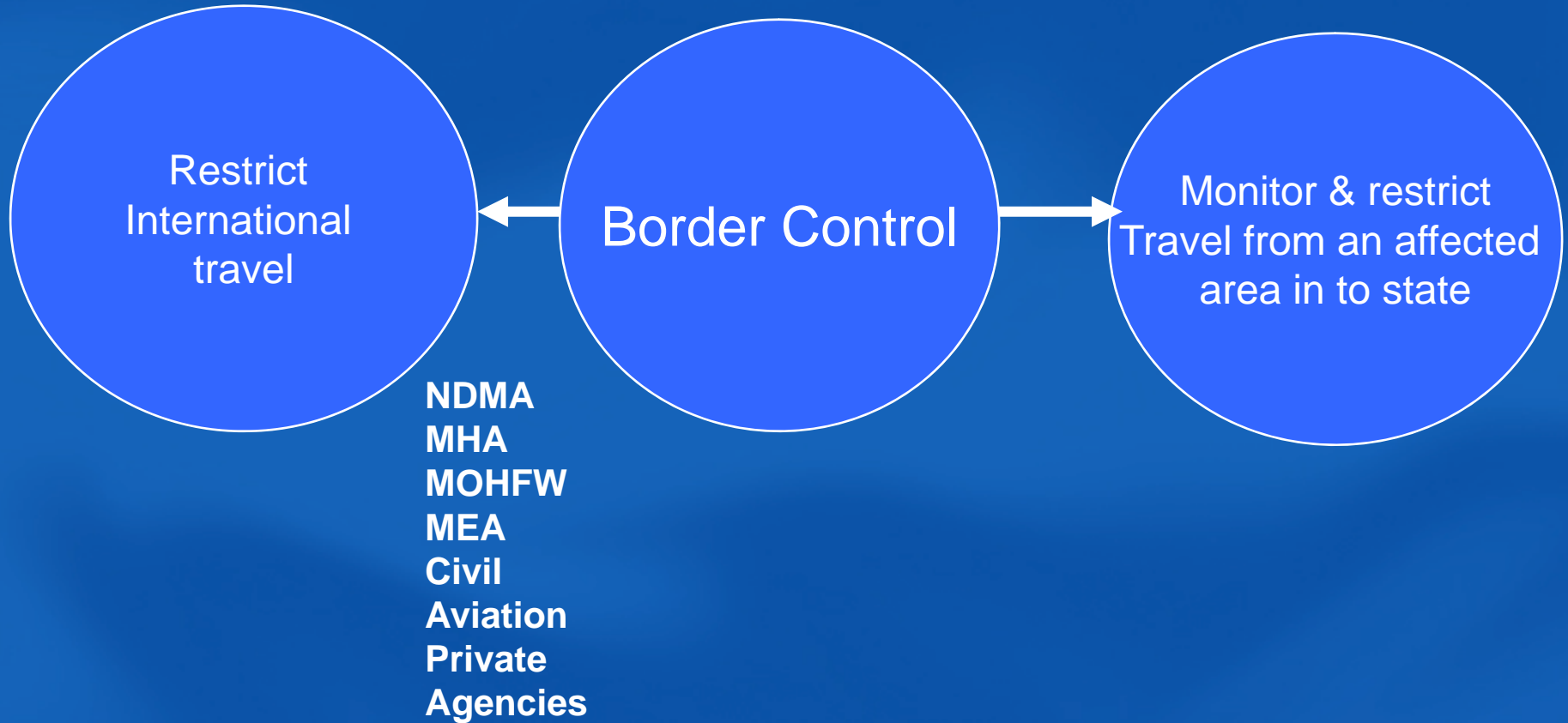
Legal and Institutional Framework

- ❑ National Disaster Management Act
- ❑ Epidemic Act (Public Health Emergencies Act)
- ❑ Cr PC / CPC
- ❑ Municipal Acts
- ❑ NDMA/SDMA/DDMA
- ❑ Central and State Health Authorities
- ❑ District Administration

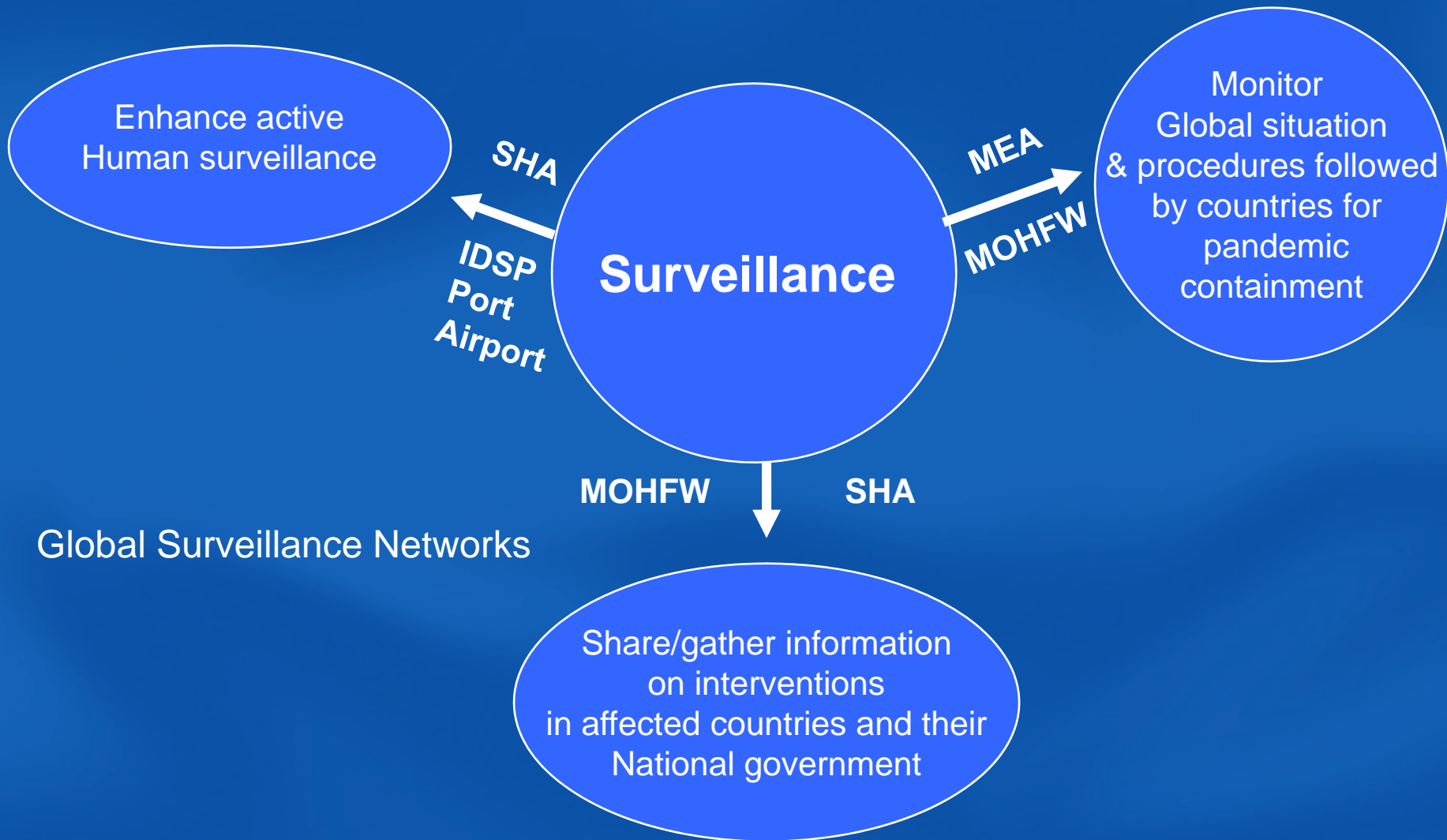
To stop/delay entry of the pandemic strain into India



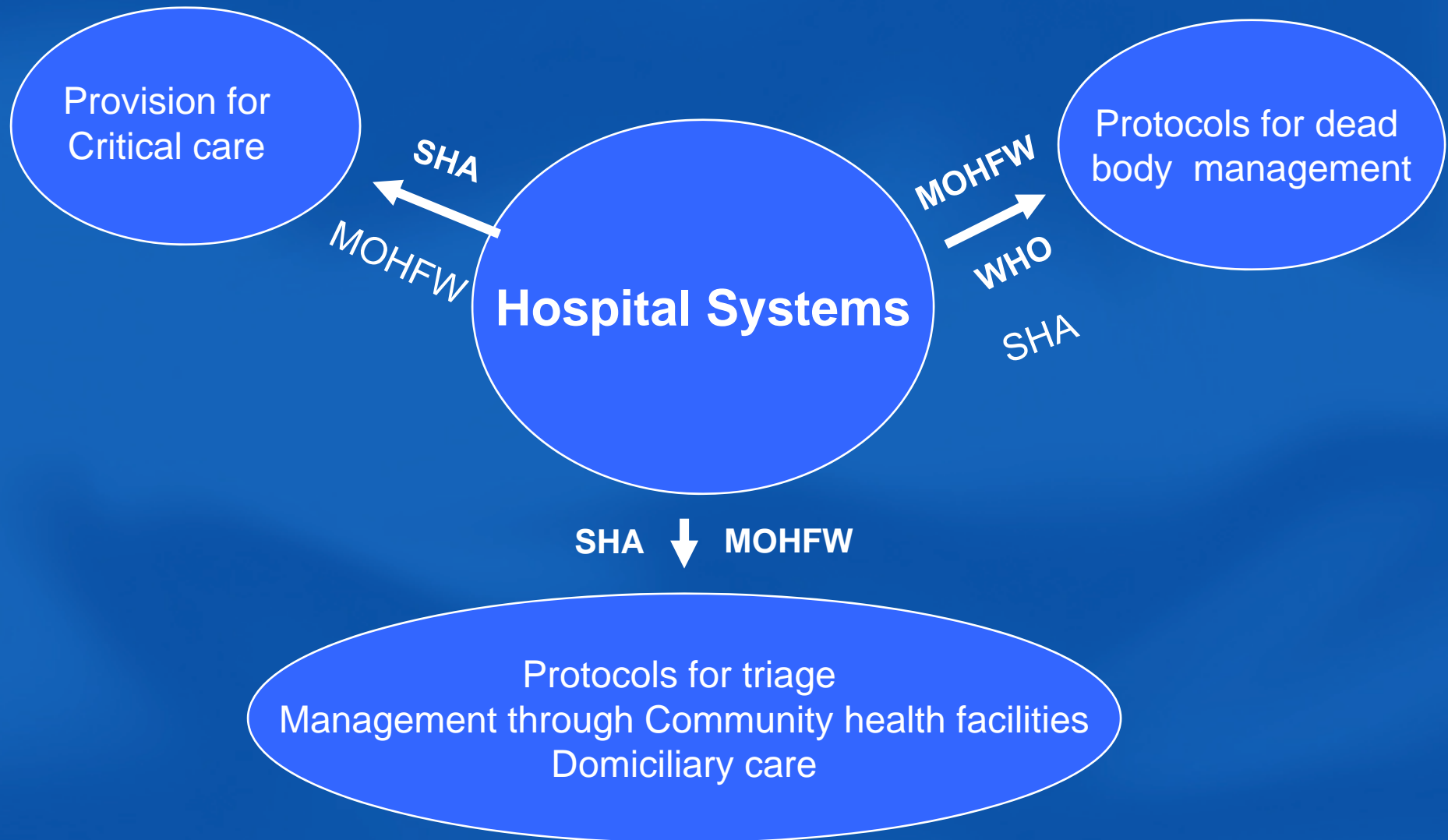
To stop/delay entry of the pandemic strain into State



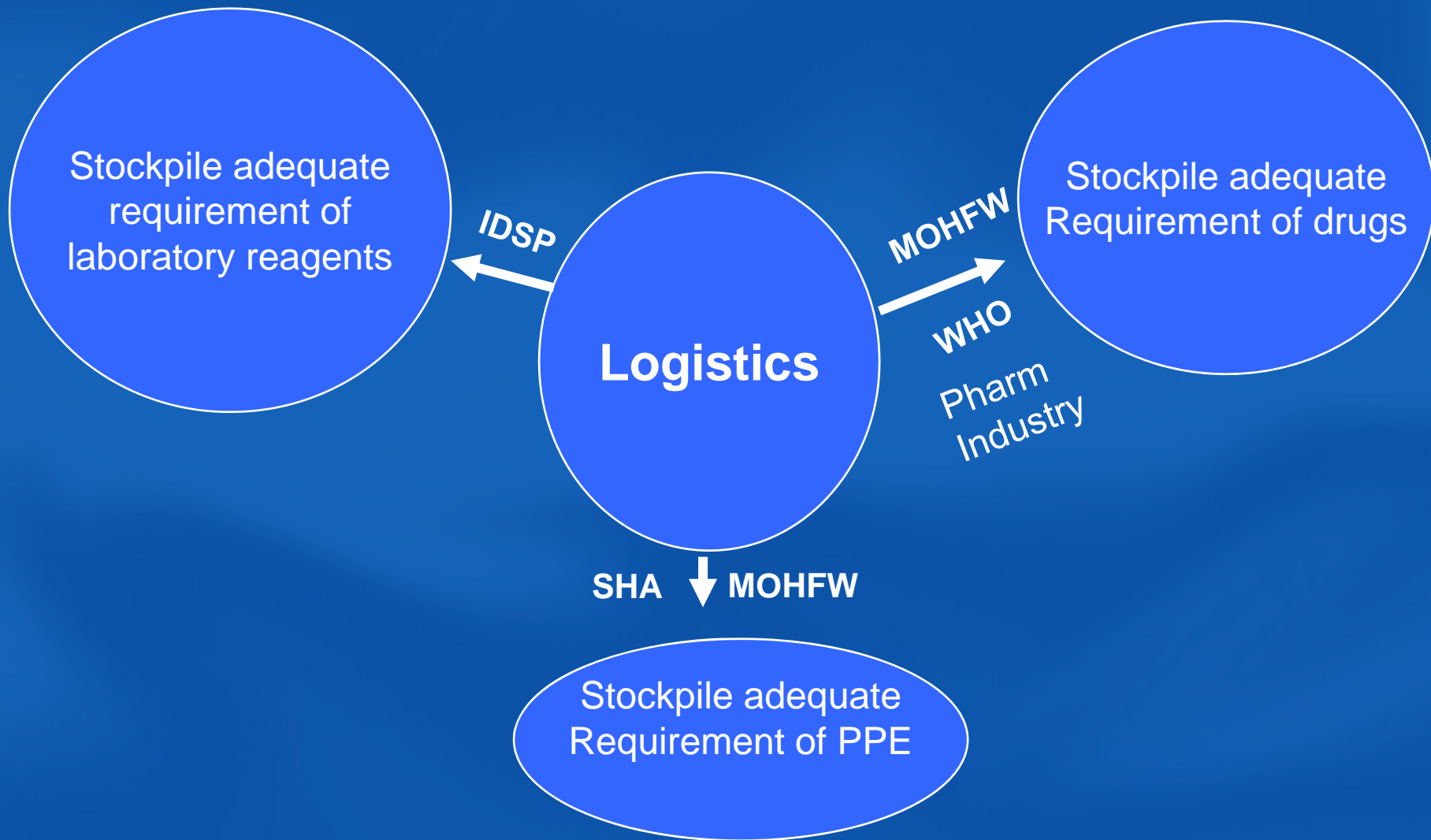
Capability to detect the early warning signs



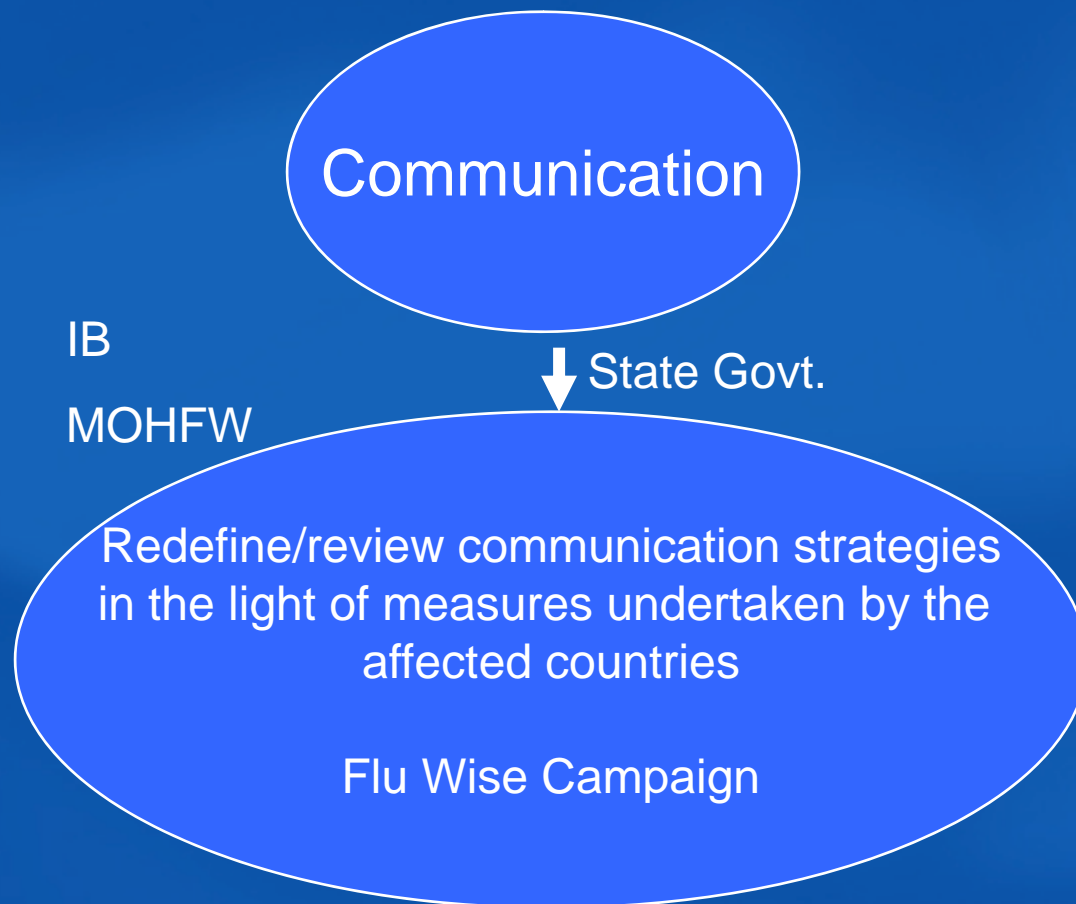
Hospital Preparedness to manage mass respiratory casualties



Ensure availability of drugs, PPE and Laboratory reagents



To ensure public access to information on global situation and on Pandemic preparedness



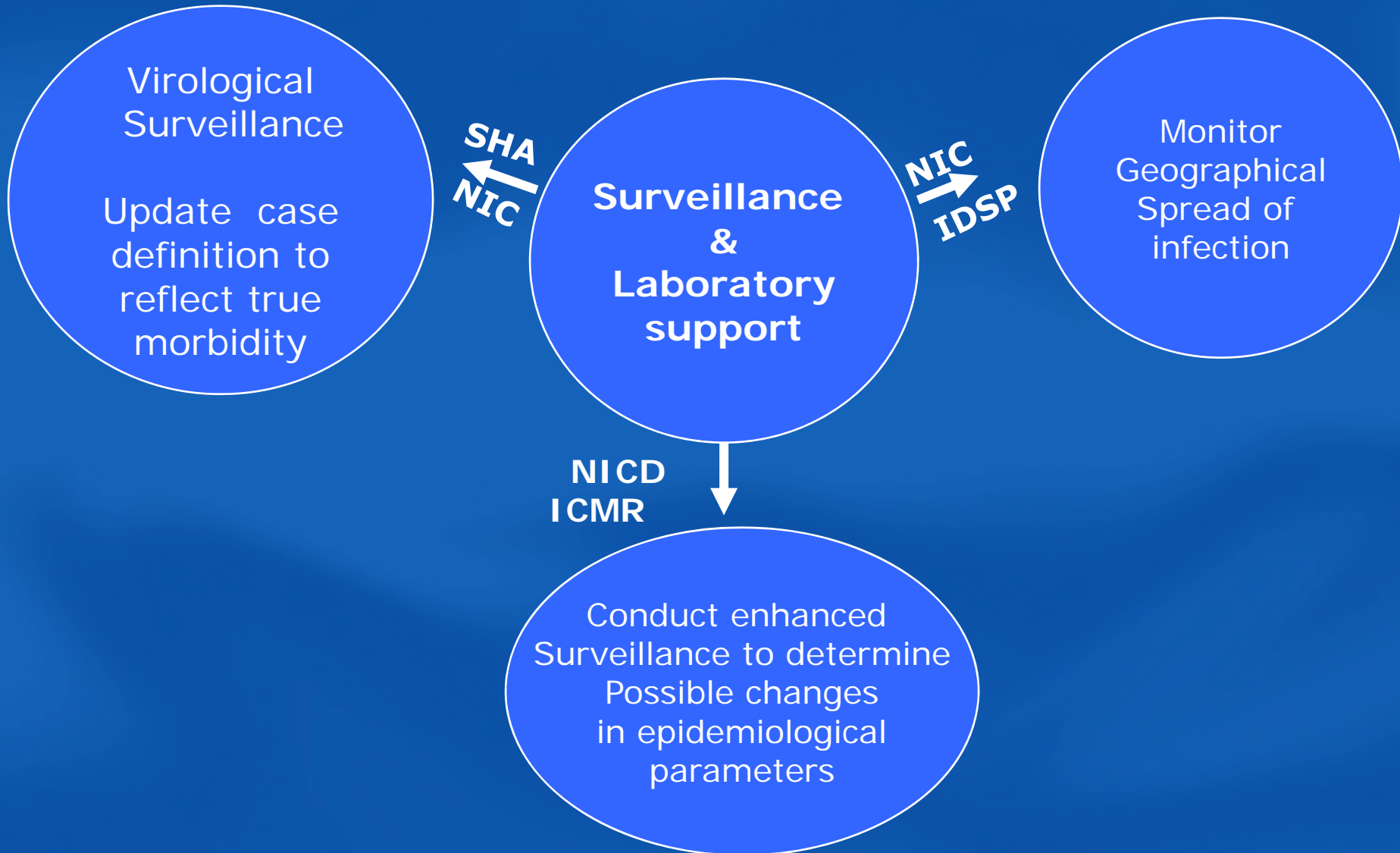
Situation - 2

INDIA affected

Implementation of procedures that would contain the infection within the limited foci.



To monitor epidemiological, virological & clinical features to forecast trends & optimize resources



Ensure availability of drugs and vaccine and its rational use



Hospital Systems

Optimize patient care
with limited resources

Create surge capacity
within existing hospitals

SHA & District Admn

Ensure equitable access
To medical care

Day care centers &
Temporary hospitals

Ensure treatment at
all centers & free to poor

SHA/ DHS (Med)

Reduce overall
Impact on Hospitals

Triage
Domiciliary Care
Community Care

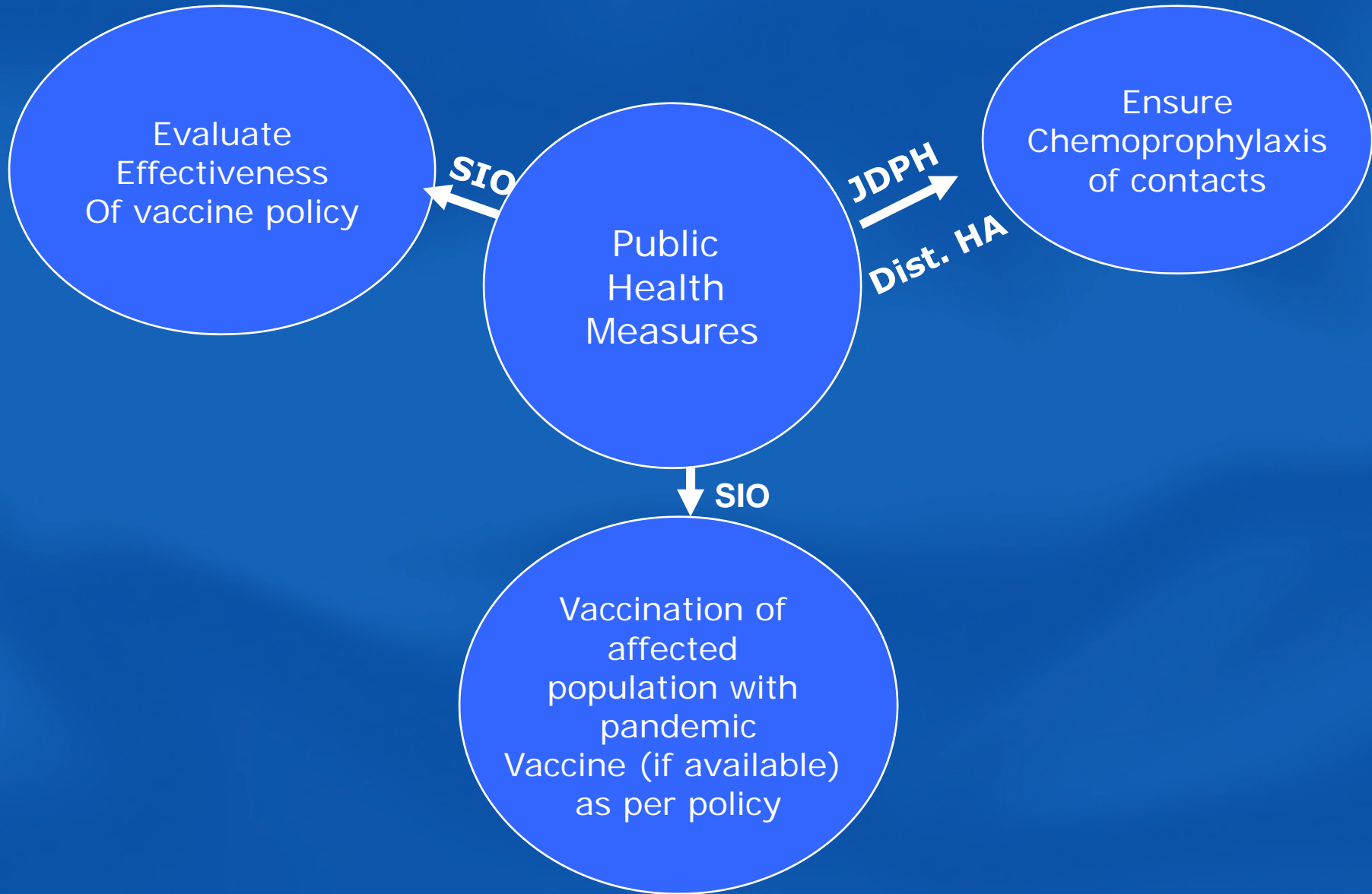
SHA, DM, CMO

Manage demand
on health system

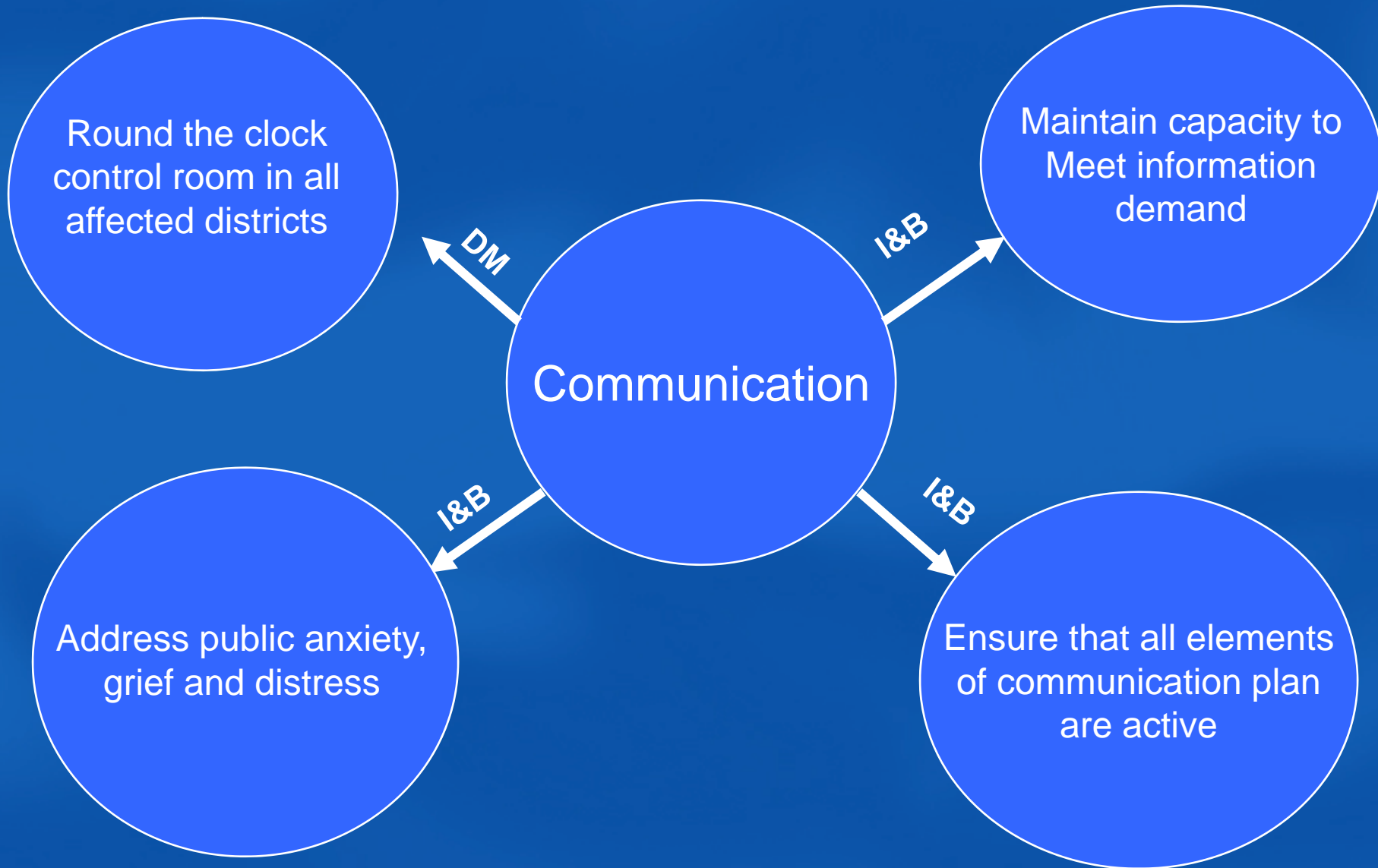
Implement guidelines for
mass fatality management
Address psychological
impact

DM

Protecting population in affected areas



Ensure public access to credible and consistent information



Ensuring Continuity of business and maintaining essential services

National Disaster Management Authority
State Disaster Management Authority

To ensure mobilization of all resources for mounting response

To ensure conformity to travel and other restrictions of civic life

Enforce appropriate legal provisions to ensure coping with large scale morbidity and mortality

Enforce administrative decisions for recalling health personnel and others to maintain essential services for duty/
cancellation of leave etc. & enforce emergency regulations, if required to manage crisis

Ensure Continuity of business

Maintain Essential Services

Thank you